

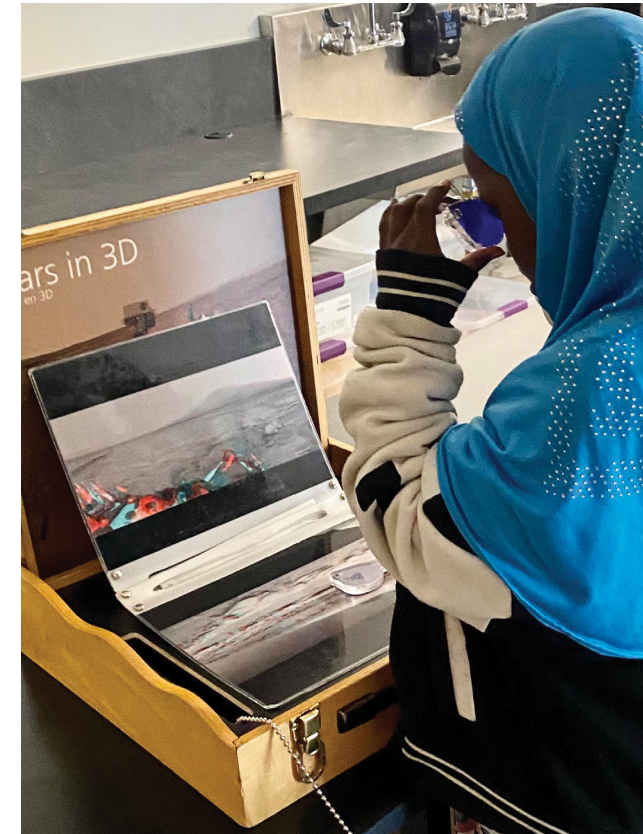
PACIFIC  
SCIENCE  
CENTER

**EDUCATOR  
GUIDE  
2024–2025**





# Table of Contents



**03**  
PacSci Programs  
at a Glance

**06**  
Digital Discovery  
Workshops

**10**  
Science on  
Wheels



**14**  
Field Trips

**18**  
Pricing and  
Registration



# PacSci Programs at a Glance



	Digital Discovery Workshops
<b>Program Description</b>	<p><b>You join us, digitally, from anywhere!</b></p> <ul style="list-style-type: none"> <li>• Online live STEM workshops led by our educators!</li> </ul>
<b>Audience</b>	<ul style="list-style-type: none"> <li>• PreK–12</li> <li>• Classrooms, community groups, libraries, camps, and more!</li> </ul>
<b>Duration</b>	40 minutes
<b>Number of Participants</b>	50 learners per program***
<b>Location</b>	Anywhere!
<b>Accessibility</b>	Our educators are trained to deliver programs to different levels, dual language classrooms, and sensory-friendly environments. Please inform us of any specific needs.
<b>Price</b> (see p. 18–19)	Starts at \$250*

Science on Wheels (Whole Day)	Science on Wheels (Partial Day)	Field Trips
<p><b>We come to you!</b></p> <ul style="list-style-type: none"> <li>• Live science show, classroom workshops, and exhibit exploration</li> </ul>	<p><b>We come to you!</b></p> <ul style="list-style-type: none"> <li>• Choose one (1) of the following:               <ul style="list-style-type: none"> <li>· Live science show</li> <li>· Classroom workshops</li> <li>· Exhibit exploration</li> </ul> </li> </ul>	<p><b>You come to us!</b></p> <ul style="list-style-type: none"> <li>• Self-guided exploration of PacSci exhibits</li> <li>• Optional Planetarium, IMAX, and Laser Dome add-ons</li> </ul>
<ul style="list-style-type: none"> <li>• K–8</li> <li>• Entire school</li> </ul>	<ul style="list-style-type: none"> <li>• K–8</li> <li>• STEM Nights, community groups, libraries, camps, and more</li> </ul>	<ul style="list-style-type: none"> <li>• PreK–12</li> <li>• Classrooms, community groups, libraries, camps, and more!</li> </ul>
6–8 hours	1–3 hours	Typically 3–6 hours; customizable to fit needs
Up to 480 participants per day	<ul style="list-style-type: none"> <li>• Science Show: Up to 400 participants</li> <li>• Workshops: 1–3 classrooms or groups with up to 32 participants each</li> <li>• Exhibit Exploration: Up to 300 participants</li> </ul>	Flexible group sizes. Please contact us for personalized arrangements.
<ul style="list-style-type: none"> <li>• Local and Western Washington year round</li> <li>• Eastern Washington seasonally (September–early November and March–June)</li> </ul> See map on p. 13 for details	Local only** year round	Downtown Seattle Center
Our educators are trained to deliver programs to different levels, dual language classrooms, and sensory-friendly environments. Please inform us of any specific needs. Exhibits are written in both English and Spanish.		Programs and facilities are accessible to all, regardless of ability. Please inform us of any specific needs.
Starts at \$2,500*	Starts at \$790*	Starts at \$10 per student*

\* Financial assistance and funding available for qualifying schools, libraries, and community groups.  
 \*\* Some partial-day programming is available regionally with additional travel fees. Inquire for more info.  
 \*\*\* Select programs are available for larger groups—see pages 8–9 for more info.





# Digital Discovery Workshops

PacSci brings live and interactive virtual STEM programming directly to you.



PacSci educators join you live from our Digital Learning Studio



Pairable with Science on Wheels and Field Trips



Includes a Teacher Toolkit with supplemental learning materials



Workshops support NGSS







### Animal Adventure

Best for Grades: PreK–2  
Max. Participants: 50

Why do some creatures have fangs, fur, or scales? Go on an animal adventure to compare different species, and learn how animal adaptations help them survive!



### Ecosystem Investigators

Best for Grades: 3–8  
Max. Participants: 50

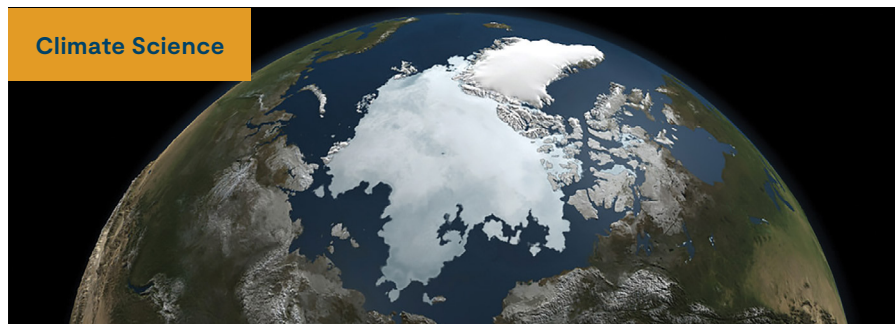
Work together to create a virtual ecosystem model revealing how living and non-living parts connect and interact in an aquatic environment.



### Global Soundscapes

Best for Grades: 3–12  
Max. Participants: Unlimited

Embark on an ear-opening journey into the science of sound and the exciting new field of soundscape ecology. Discover what soundscapes can tell us about the changing health of our planet.



### Polar Predictions

Best for Grades: 3–8  
Max. Participants: 50

Join us on an icy expedition to Earth's polar regions to discover the role they play in regulating our planet's climate and how changes at the poles have a global effect on Earth.



### Piece of Mind

Best for Grades: 3–8  
Max. Participants: 50

Be awe-inspired by the power of the brain as students learn how it controls memory, movement, and sight. Discover how the brain functions through live activities and fun puzzles, and see a real human brain specimen!



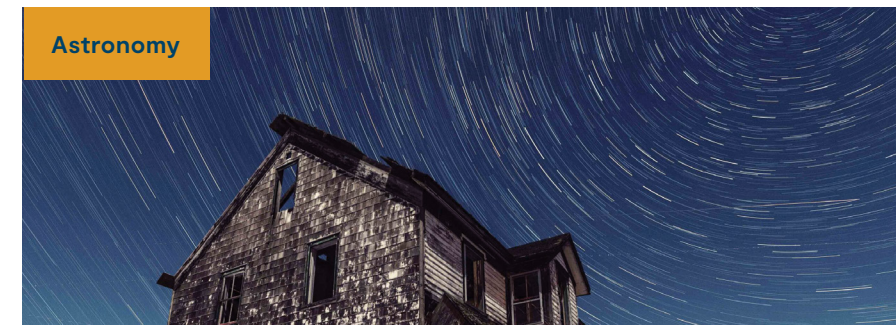
### Engineering



### Radical Reactions

Best for Grades: K–12  
Max. Participants: Unlimited

Observe the explosive ways chemicals unite and react in this high-energy show! Discover the signs of chemical reactions through experimentation and learn how they create the world around us.



### Stick the Landing: Engineering Series

Best for Grades: 3–8  
Max. Participants: 50

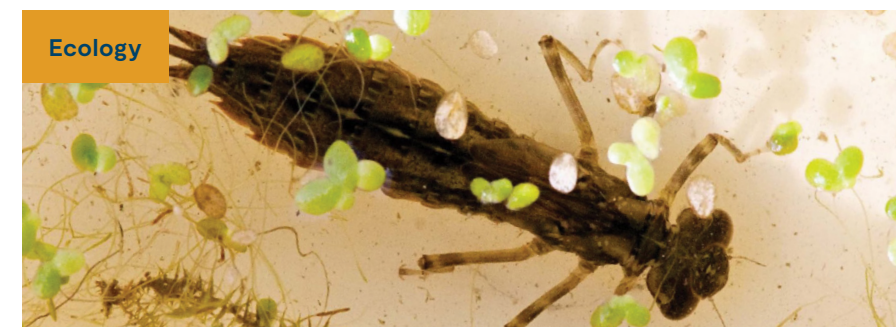
Over the course of three sessions, use the steps of the engineering design process to build, test, and refine your own model of a Mars lander in your learning space.



### Planetarium: Night Sky Tonight

Best for Grades: PreK–12  
Max. Participants: Unlimited

Become a backyard astronomer with our virtual planetarium. Learn how living on a giant spinning ball changes what can be seen each night, discover how to find constellations, and how the sky can be used for navigation.



### Planetarium: Planetary Geology

Best for Grades: PreK–12  
Max. Participants: Unlimited

Take a wild virtual ride to visit some of the planets and moons that make up Earth's neighborhood: the solar system. Explore these unique landscapes and search for craters, volcanoes, oceans, and more!

### Wetland Wonderers

Best for Grades: PreK–2  
Max. Participants: 50

Join us on a virtual hike to learn how a wetland habitat provides food, water and shelter to the animals that call it home. Practice your nature observation skills by exploring live aquatic organisms from a wetland pond.



# Science on Wheels

PacSci travels across the state with interactive STEM programs. Choose between whole- or partial-day experiences.



PacSci educators travel directly to you



Great for schools, libraries, and community groups



Pairable with Digital Discovery Workshops



Programs support NGSS



## Science on Wheels Components



**Live Science Show**  
Max. Participants: 480

PacSci educators host an assembly with thrilling demonstrations designed to spark your learners' excitement for STEM.



**Workshops**  
Max. Participants: Up to 32 learners each

Interactive STEM lessons with hands-on experiences in your classroom led by PacSci educators.



**Pop-up Exhibit Exploration**  
Max. Participants: 300

Learners explore themed, self-guided exhibits, featuring bilingual materials and hands-on activities.

## Program Themes

Blood and Guts	Engineering	Physics	Space Odyssey	Chemistry
Explore human and comparative biology.	Find out what it takes to be an engineer.	Learn how physics affects everyday life.	Discover astronomy and planetary science.	Experience the thrills of chemical reactions.
<b>Learn about...</b> <ul style="list-style-type: none"> <li>· Skeletal system</li> <li>· Circulatory system</li> <li>· Nervous system</li> <li>· Optical illusions</li> <li>· Brain anatomy</li> <li>· Animal and human organs</li> </ul>	<b>Learn about...</b> <ul style="list-style-type: none"> <li>· Engineering process</li> <li>· Electrical engineering</li> <li>· Structural engineering</li> <li>· Environmental engineering</li> <li>· Problem-solving</li> <li>· Robotics</li> <li>· Engineering careers</li> </ul>	<b>Learn about...</b> <ul style="list-style-type: none"> <li>· Electricity</li> <li>· Circuits</li> <li>· Magnetics</li> <li>· Light</li> <li>· Forces</li> <li>· Acoustics</li> <li>· Energy</li> </ul>	<b>Learn about...</b> <ul style="list-style-type: none"> <li>· Planetary science</li> <li>· Celestial patterns</li> <li>· NASA missions</li> <li>· Astronomy</li> <li>· Spectroscopy</li> <li>· Robotics</li> </ul>	<b>Partial-day experience only (see page 12)</b>  <b>Topics covered</b> <ul style="list-style-type: none"> <li>· Signs of chemical reactions</li> <li>· Acids and bases</li> <li>· Combustion reactions</li> <li>· Atoms and molecules</li> </ul>

Visit [pacsci.org/sow](http://pacsci.org/sow) to view the full list of programming options.



## Whole-Day Experiences

Includes **all three** of our Science on Wheels Program Components.

Each whole day experience begins with a live science show for the whole school. Next, our educators will visit 10 or 15 classrooms to lead 45-minute workshops. Classrooms will simultaneously visit our pop-up exhibit area.

Whole day experiences last 6–8 hours and serve up to 480 students per day. For larger sites, we can visit for two consecutive days.



## Partial-Day Experiences

Bring Science on Wheels to your learning site for just part of the day with an a la carte experience. Choose **one** of the Science on Wheels program components (see page 11) that best suits your needs. Our programs provide a variety of styles and topics, so there is something for every audience. Partial day experiences last 1–4 hours.

**Exhibit Exploration:** Great for multi-age audiences that want to visit at their own pace, for example, a Family STEM Night event.

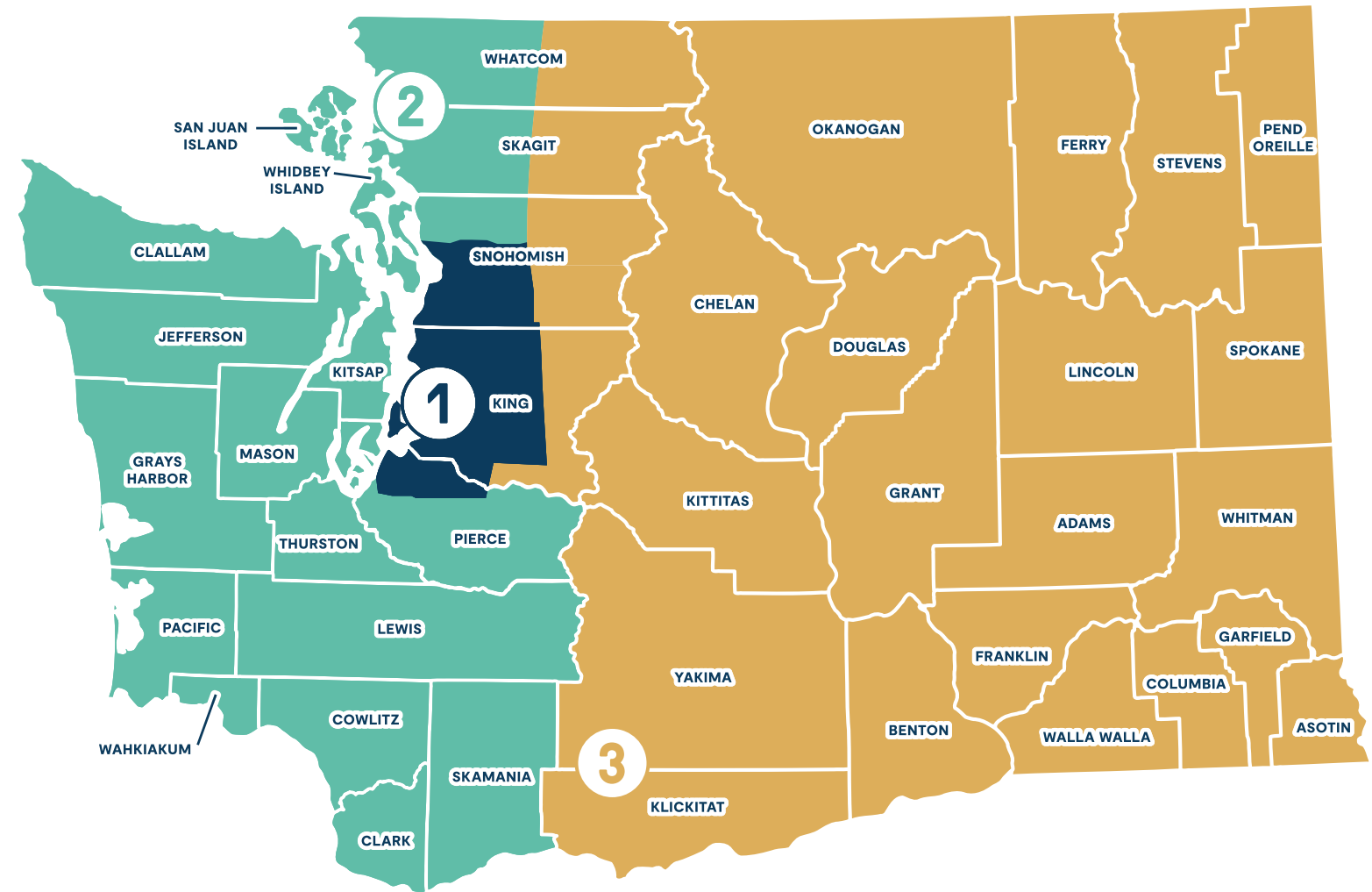
**Workshops:** Perfect for smaller groups looking for in-depth learning experiences, such as summer camp programs!

**Science Show:** Best for multi-age audiences looking for a breathtaking 45-minute show, like community groups!



“  
**The work Pacific Science Center does is exceptional, and the programs are always one of the highlights of the year for our school.**  
 ”

## Offerings Map



1	Local	2	Western Washington Regional	3	Mountain and Eastern Regional
	<ul style="list-style-type: none"> <li>• Whole-day experiences year-round</li> <li>• Partial-day experiences year-round</li> </ul>		<ul style="list-style-type: none"> <li>• Whole-day experiences year-round</li> <li>• Minimum of two program days required. Please book on consecutive dates, or consider booking in conjunction with a nearby school.</li> </ul>		Whole-day experiences seasonally: <ul style="list-style-type: none"> <li>• September–early November</li> <li>• March–June</li> <li>• Minimum of two program days required. Please book on consecutive dates, or consider booking in conjunction with a nearby school.</li> </ul>

Email our registration team at [edprograms@pacsci.org](mailto:edprograms@pacsci.org) to learn what is available in your area.



# Field Trips

A trip to PacSci is a valuable learning experience and will ignite student's curiosity for STEM. Explore our hands-on exhibits, shows, and innovative programming.



Bring your school to PacSci



Explore PacSci's exhibits, shows, and programs



Pre-visit guides available



Pairable with Digital Discovery Workshops



## Exhibits

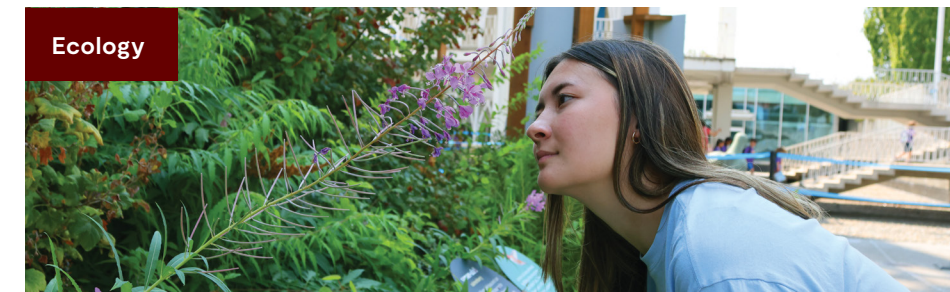
Explore the many interactive exhibits of PacSci! Listed below are just a few of the new and expanded additions to our on-site experience. For a complete list of available exhibits, visit our website at [pacsci.org/visit](https://pacsci.org/visit).



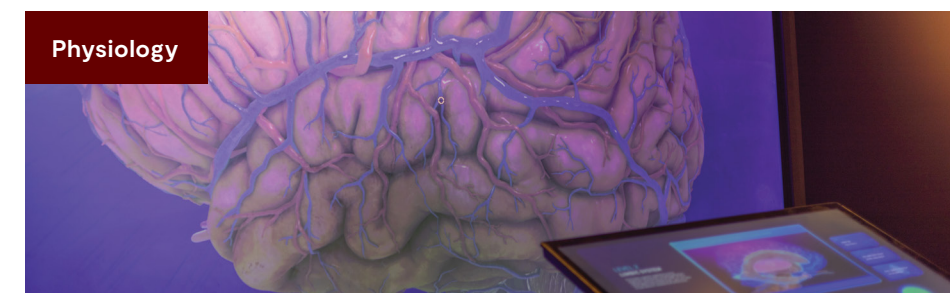
***Creatividad silvestre / Wild Creativity***  
*Runs September 21, 2024–January 5, 2025*  
Explore the concepts of biomimicry through design challenges. *Creatividad silvestre / Wild Creativity: Biomimicry Changing Our World* was produced and is toured by the Oregon Museum of Science and Industry. The exhibit was made possible by a National Science Foundation grant.



***Physics Playground***  
Play with the forces that make up our universe. Explore how matter and energy interact, and experiment with simple machines—including a returning favorite, the giant lever!



***Pollinator Path***  
Take a stroll and learn about the cyclical relationships between native plants and pollinators. This exhibit was developed in partnership with Owen Oliver (Quinault/Isleta Pueblo).



***Brainy Bodies***  
*Opens December 6, 2024*  
Learners will find out how the nervous system, muscles, and senses are interconnected, and reflect on the ways that each of our unique bodies affect the ways we experience the world.



***Tinker Tank Makerspace***  
Experiment and innovate in Tinker Tank, our hands-on makerspace. Try engineering and design challenges through hands-on activities, while learning new skills to invent and iterate.



## Planetarium

Enjoy a live, immersive presentation in the Willard Smith Planetarium. Blast off to the universe's outer reaches or explore the planets in our solar system. Seating is limited to 36 students and four chaperones (or any combination of the two with a maximum of 40 participants. Chaperone ratios must be observed). Limited showings are available.



## Laser Dome

Packed with 10,000 watts of concert sound, experience a one-of-a-kind show on one of the largest geocentric domes dedicated to lasers!



“ Many [students] have never even been on a bus, let alone Seattle. There was pure joy and amazement in their faces that day. ”



## IMAX Documentaries

PacSci is the home of Seattle's ultimate IMAX experience and the largest screen in Washington with two state-of-the-art theaters: Boeing and PACCAR. Our movies are brought to life by state-of-the-art IMAX Laser technology, putting you right in the action. Below is just a sample of our movie offerings. For a complete list of IMAX documentary movies and accompanying educator guides, visit [pacsci.org](http://pacsci.org).



**Deep Sky**  
Deep Sky brings the awe-inspiring images captured by NASA's James Webb Space Telescope to IMAX — taking audiences on a journey to the beginning of time and space, to never-before-seen cosmic landscapes, and to recently discovered exoplanets, planets around other stars.



**Blue Whales: Return of the Giants**  
Explore the world of the magnificent blue whale, a species rebounding from the brink of extinction. Following two scientific expeditions, the film is an inspirational story that transforms our understanding of the largest animal ever to have lived.



**T.Rex**  
Opens October 2024  
Working with top tyrannosaur scientists, a coalition of natural history institutions, and pioneering paleo and visual effects artists, this original documentary on the iconic dinosaur—and its carnivorous Cretaceous cousins—aims to be the most dazzling and accurate T. rex documentary ever made.



# Pricing and Registration

## Digital Discovery Workshops

Number of participants	Price
1-99	\$250
100-199	\$350
200-299	\$450
300+	\$550

Book Digital Discovery Workshops at [pacsci.org/education](https://pacsci.org/education). Program must be booked at least two weeks in advance. Our registration representatives will get back to you within 2-4 business days and provide a Calendly link to book a program.

## Science on Wheels: Whole-Day Experience

Location*	10 Classroom Workshops, Assembly, and Exhibits	15 Classroom Workshops, Assembly, and Exhibits
Local	\$2,500	\$3,230
Regional	\$3,130	\$3,800

\*See map on page 13 for more details

## Science on Wheels: Partial-Day Experience

Programming Component (choose one)	Base Price	Add an hour of the same programming
45-minute Live Science Show	\$790	+\$260 (\$1,050 total)
3 consecutive Hands-on Workshops (45 minutes each + 10-15 min reset time between workshops)	\$790	+\$260 (\$1,050 total)
3 consecutive hours with a Pop-up Exhibit Set	\$790	+\$260 (\$1,050 total)

Book a Whole- or Partial-Day Science on Wheels Experience at [pacsci.org/education](https://pacsci.org/education). Program must be booked at least six weeks in advance. Once you fill out an inquiry form, our registration representatives will get back to you within 2-4 business days. See page 13 for our programming delivery map.



## Field Trips

	Field Trip Admission	Add-on Experiences (IMAX, Laser, Planetarium)
Field Trip Student	\$10 per person	\$4 per person, per additional program type
Field Trip Chaperone	\$5 per person	\$0
Extra Field Trip Chaperone (more than 1:6 adults to youth ratio)	\$18 per person	\$4 per person, per additional program type

Book a Field Trip at [pacsci.org/field-trips](https://pacsci.org/field-trips). Book two weeks or earlier in advance. Our registration representatives will get back to you within 2-4 business days.

**Please remember:** There must be one adult chaperone for every 6 students. Chaperones are to remain with their designated students during their visit, regardless of age or grade level.

If your group does not qualify for a field trip rate, you may be eligible for Group Rates. Visit [pacsci.org/group-sales](https://pacsci.org/group-sales) to learn more.

## Contact Us

Science on Wheels & Digital Discovery Workshops  
[edprograms@pacsci.org](mailto:edprograms@pacsci.org)

Field Trips  
[fieldtrips@pacsci.org](mailto:fieldtrips@pacsci.org)

## Funding Available

Qualified low-income schools may receive up to 100% off PacSci education programs. Typically schools with 40% or higher free and reduced lunch percentage qualify for subsidies.



PACIFIC  
SCIENCE  
CENTER



200 Second Avenue N  
Seattle, Washington  
98109-4895

NON-PROFIT ORG.  
U.S. POSTAGE

**PAID**

SEATTLE, WA  
PERMIT NO. 1424



Sign up for our  
education newsletter!

Stay up to date with our  
latest educational offerings  
and educator-friendly  
resources.

Educators receive  
a 10% discount on  
personal memberships!

Learn more at  
[pacsci.org/membership](https://pacsci.org/membership).

*Pacific Science Center's Educational Programs are Presented by:*



Washington Office of Superintendent of  
**PUBLIC INSTRUCTION**

*Additional generous support provided by: Intellectual Ventures, Alaska Airlines, First Tech Federal Credit Union, Chevron Corporation, The Baker Foundation, Dennis & Phyllis Washington Foundation, SMART Technologies, Verizon, Bamford Foundation, Hazel Miller Foundation, Ruth Anderson Wheeler & Henry O. Wheeler Charitable Trust, Northwest Earth and Space Sciences Pathways funded by NASA under award no. NNX16AB86A, and an anonymous donor.*