

WHAT'S NEXT? \* WHAT'S NEXT? \* WHAT'S NEXT? \* WHAT'S NEXT?

PACIFIC SCIENCE CENTER \* SUMMER 2024

# WHAT'S NEXT?



CAMPS FOR  
CURIOUS  
MINDS

# WHAT'S NEXT?

Summers at Camps for Curious Minds are always abuzz with energy—after all, engineering underwater machines, conducting chemistry experiments, and scheming up new inventions require hard work. But even more important, the curiosity at the core of every experiment and activity requires you to ask a simple question: what's next?

Moments like these fuel a camper's enthusiasm to learn more about their passions and the world around them. This summer, we're bringing these moments to more campers by opening a new location in Kirkland at Eastside Preparatory School, offering more camps at Salish Sea Elementary, and awarding more scholarships than we have before. We can't wait to see you there, and to find out what's next.

*Camps for Curious Minds is presented by:*



## Contents

---

**04**  
Grades PreK–K

**05**  
Grades K–1

**07**  
Grades 2–3

**09**  
Grades 4–5

**11**  
Grades 6–8

**12**  
Calendar

**16**  
Registration

**18**  
Activity Page

**19**  
Mobility Guide

# CAMP LOCATIONS

## Pacific Science Center

200 2nd Ave N  
Seattle, WA 98109

*Did you know?* Specialty camps held at PacSci utilize PacSci's Digital Learning Studio.

## Salish Sea Elementary

3900 Holly Park Dr S,  
Seattle, WA 98118

*Did you know?* This summer, our Salish Sea site will be hosting additional K-1 and 2-3 grade camps.

## Explorer West Middle School

10015 28th Ave SW  
Seattle, WA 98146

*Did you know?* This is our southernmost location that offers the most 6-8 grade camps. And is now offering PreK camps too!

## Eastside Preparatory School

10613 NE 38th Pl,  
Kirkland, WA 98033

*Did you know?* Eastside Preparatory is our newest addition to our camp locations!

## St. Thomas School

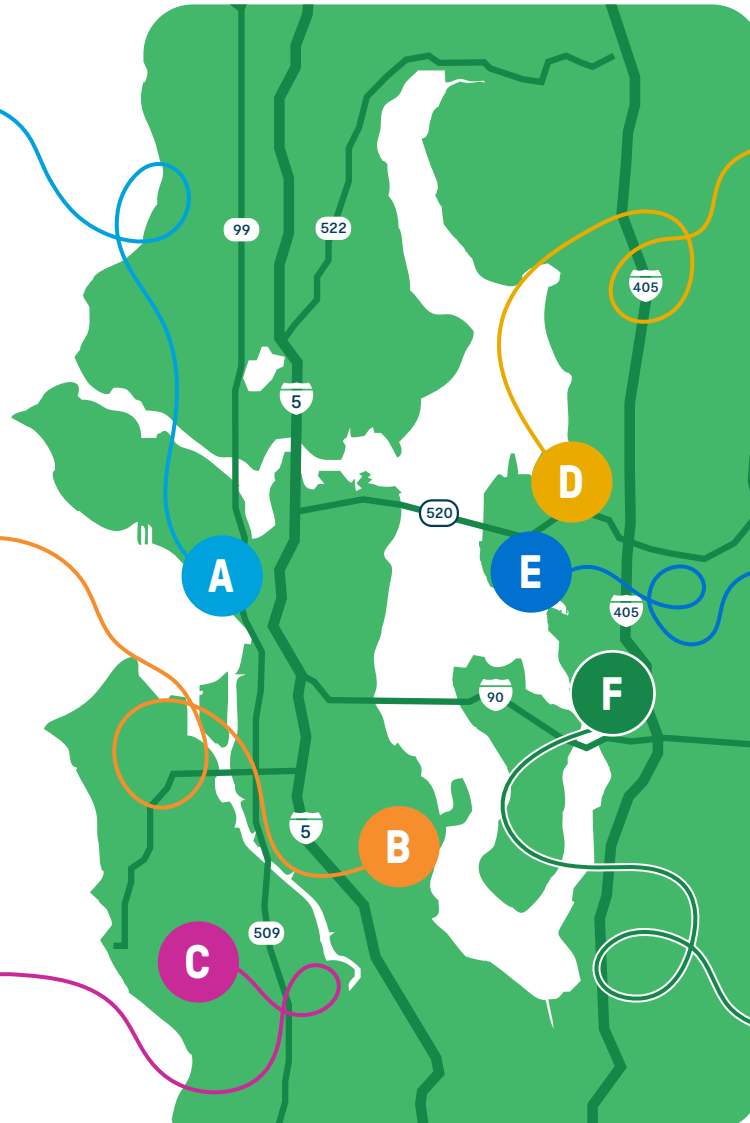
8300 NE 12th St  
Medina, WA 98039

*Did you know?* Our St. Thomas site has three new camps available this summer.

## Mercer Slough Environmental Education Center

1625 118th Ave SE  
Bellevue, WA 98005

*Did you know?* Our Mercer Slough site hosts specialty outdoor classrooms!





# Grades PreK–K

## Animal Discoveries

Why do coyotes have wet noses? How do deer hear so well? Find out how animals use their senses to explore their world through stories, games, and art.

[Mercer Slough AM: Weeks 2, 6](#)

[Mercer Slough PM: Weeks 4, 8, 10](#)

## Colorful Creations

Everyone views our colorful world differently; how do you see the colors around you? Experiment with the visible light spectrum, learn how others see the world, and use surprising items to create colorful art.

[Explorer West PM: Week 5](#)

[PacSci AM: Week 7](#)

[PacSci PM: Week 9](#)

[Salish AM: Week 3](#)

## Curious Creatures

Discover what animals need to live in the wild and how they have adapted to survive in different environments. Learn about insects, polar bears, and snakes to inspire your own art pieces!

[Explorer West AM: Week 4](#)

[PacSci AM: Weeks 8, 10](#)

[PacSci PM: Week 2](#)

## Fantastic Forests

Learn about the many plants of Mercer Slough and the animals that live with them. Use nature to make art, find hidden forest friends, and learn about the habitats different creatures call home.

[Mercer Slough AM: Weeks 1, 5, 9](#)

[Mercer Slough PM: Weeks 3, 7](#)

## Hydro Heroes

Explore the water cycle, aquatic life, hydropower, and more with us. Play games, make art, and do exciting experiments as you become a Hydro Hero.

[Explorer West AM: Week 8](#)

[PacSci PM: Weeks 3, 6](#)

[Salish AM: Week 1](#)

## Little Lab

Join us for an introduction to chemistry, engineering, and physics. Discover how bubbles pop, construct a skyscraper, and learn about simple chemical reactions.

[Explorer West AM: Week 6](#)

[PacSci AM: Weeks 4, 9](#)

[Salish AM: Week 2](#)

## Mud, Muck, & Goo

What makes the ground so squishy and slugs so slimy? Make slime, investigate mysterious animal tracks, meet crawly creatures, and more!

[Mercer Slough AM: Weeks 3, 7](#)

[Mercer Slough PM: Weeks 1, 5, 9](#)

## Ready, Seed, Grow!

Grow your knowledge about the wonderful world of plants! Play games, listen to stories, and make your own plant-themed art to take home.

[Explorer West PM: Week 7](#)

[PacSci AM: Week 5](#)

[PacSci PM: Weeks 1, 10](#)

[Salish PM: Week 3](#)

## Snack Science

Is the perfect snack crunchy, salty, gooey, or colorful? Use your senses to explore the colors, smells, and tastes of food. Experiment with kitchen chemistry and make your own tasty treat!

[Explorer West PM: Week 6](#)

[PacSci AM: Week 2](#)

[PacSci PM: Weeks 4, 8](#)

**NEW! NEW! NEW! NEW!**

## Tiny Tales

Leap into a week of storybook fun! Campers will explore worldwide cuisine, the secrets of the forest, and the colors that make up our world through literary adventures paired with science experiments!

[Explorer West AM: Week 5](#)

[PacSci AM: Week 1](#)

[PacSci PM: Week 7](#)



## To the Moon

Become an astronomer and blast off into a week of space-themed crafts and stories. Make and take home your own moon sand, model planet, and constellation art while learning about the universe.

[Explorer West AM: Week 7](#)

[PacSci AM: Week 3](#)

[PacSci PM: Week 5](#)

[Salish PM: Week 1](#)

## Wild Explorers

Discover and map new territory at Mercer Slough. Investigate underwater insects, unearth soil invertebrates, and search for wild animal tracks!

[Mercer Slough AM: Weeks 4, 8, 10](#)

[Mercer Slough PM: Weeks 2, 6](#)

## World of Wonder

Explore our amazing planet with this introduction to Earth science! Build a volcano, discover rainbows, and make a globe to decorate and take home at the end of the week.

[Explorer West PM: Weeks 4, 8](#)

[PacSci AM: Week 6](#)

[Salish PM: Week 2](#)

# Grades K–1

## 3–2–1 Blast Off!

Galaxies, black holes, and shooting stars await a junior astronomer just like you! Get hands-on astronomical experience by mapping out the solar system, launching rockets, and making your own model planet to take home.

Eastside Preparatory: Week 2

PacSci: Weeks 4, 8

St. Thomas: Week 6

## Beginner's Biology

Discover the beauty of biology from the smallest cells all the way to the biggest ecosystems! Dissect parts of a plant, explore adaptations of animals, and discover the mystery of microbes in this lively week of camp.

Eastside Preparatory: Week 1

Explorer West: Week 5

Salish: Week 3

St. Thomas: Week 7



## Biome Bonanza

Discover the many ecosystems in our state and learn how creatures like birds and bugs have adapted to them. Become an expert as we dissect owl pellets, build take-home terrariums, and design our own animals!

Eastside Preparatory: Week 3

PacSci: Weeks 5, 7

Salish: Week 1

## Birds, Bugs, & Bunnies

Did you know that owls can fly without making a sound? Discover hidden burrows and streams as you learn fascinating facts about our furry, fuzzy, and feathery friends at the slough!

Mercer Slough: Weeks 1, 3, 6, 9

NEW! NEW! NEW! NEW!

## Bug-ology

Calling all insect enthusiasts! This camp is for those who enjoy the smaller things in life. Join us as we uncover the secrets to six legs, the wonders of wiggling like a worm, and what it takes to make it as a little bug in a big world!

PacSci: Weeks 3, 5

St. Thomas: Week 7

## Building Blocks

Calling all builders to join us as we explore the greatest wonders of the world! Learn the basics of architecture while we build our engineering and art skills to design new structures by experimenting with materials from textured paint to K'Nex.

Explorer West: Week 8

PacSci: Weeks 6, 10

St. Thomas: Week 4

## Cookie Caper

PacSci's top secret cookie recipe has been stolen and we need your help! Build your investigative skills as you take a closer look into the chemical reactions behind cookie ingredients and make your own perfect chocolate chip cookie to solve the mystery.

Explorer West: Week 5

PacSci: Weeks 1, 3, 7, 8

Salish: Week 2

St. Thomas: Week 6

## Heating Up

Lights, fuel, friction! Investigate how the chemistry of heat affects all things. Learn the ingredients of a fire, make a fire breathing creature, and learn fire safety through exciting demos.

Explorer West: Week 4

PacSci: Week 9

St. Thomas: Week 6

## Legends of Polliwog Pond

The Pirate of Polliwog Pond left behind a map and we need your help deciphering it! Work with a team to solve puzzles and riddles that will guide you to the treasures of the wetlands.

Mercer Slough: Weeks 4, 7, 10

## Little Olympics

Join our Olympic games as we get active and jump into the science behind sports and how our bodies move. Play like an Olympian while using teamwork to create an obstacle course, complete a relay race, and play a new sport every day!

Explorer West: Week 7

Salish: Week 2

St. Thomas: Week 5

## Make Sense of It

How does your sense of smell help you taste food? Can your sense of touch protect you from danger? Find out all the ways we use our senses! Put your eyes, ears, and nose to the test through science experiments, games, and sense-sational art.

Explorer West: Week 6

PacSci: Weeks 2, 9

St. Thomas: Week 4

# Grades K–1

## Natural Creations

Take your artistic flair outside! Extract colorful dyes, make your own paper, delve into detailed drawings, and craft cool creations using trees, flowers, and recycled materials.

Mercer Slough: Weeks 2, 5, 8

## Smartest Artist

Discover the science behind the art in nature, in the city, and pictures on your fridge. Create unique pieces of art to take home by experimenting with paints, dyes, and textures.

Explorer West: Week 4

PacSci: Weeks 2, 8, 10

## Start Your Engines

Buckle your seatbelt, adjust your mirrors, and roar into motion! Experiment with alternative energy sources like rubber bands, balloons, and electricity. Design, build, and test your own car, boat, and rocket!

Explorer West: Week 8

PacSci: Weeks 1, 6

St. Thomas: Week 4

## Story Explorers

Become a literary explorer and venture into tales of science and discovery! Experiment with concoctions, journey with animals in a forest, and create weather phenomena with your own hands as you write your own story!

Eastside Preparatory: Week 3

PacSci: Week 7

Salish: Week 1

St. Thomas: Week 5



## Superheroes

Use your super science skills to design a super vehicle, test your super senses, and mix up super solutions in the lab. Combine your favorite powers to create your superhero identity, complete with a costume and gadgets.

Eastside Preparatory: Week 1

PacSci: Week 5

Salish: Week 3

St. Thomas: Week 7

## Teddy's Grand Adventure

Join your new teddy bear on an adventure to explore science careers! Create a journal for you and Teddy as you explore medicine, flight, engineering, and more.

Eastside Preparatory: Week 2

Explorer West: Week 7

PacSci: Weeks 1, 3, 4, 6, 10

St. Thomas: Week 5



**My 7-year-old loved [Clever Contraptions] at the Pacific Science Center ... In fact, he said it might be one of the best camps he's ever been to.**

— *2<sup>nd</sup> Grade Parent*



## Wild Ocean Adventures

Discover the wonders of marine biology and learn all about the ocean and the animals that live there. Create ocean art with shells and shark teeth, then build your own submarine to take home.

Explorer West: Week 6

PacSci: Weeks 2, 4, 9





## Grades 2–3

### Artsy Forestry

Channel your inner artist as you hike the trails of Mercer Slough with your sketchbook in hand. Get inspired by the textures, shapes, and colors of the natural world to express your creative side!

Mercer Slough: Weeks 3, 6, 10

### Beaker Buddies

Grab your beakers and your buddies as we practice teamwork to discover the science behind curious concoctions! Let's react together in this chemically fun week as you choose real world scenarios to solve with our science knowledge.

Explorer West: Week 7

PacSci: Weeks: 3, 9

St. Thomas: Week 5

### Candyology

This is a camp you can really sink your teeth into! Come discover the sugary science behind some amazing sweet treats. Each day, you will learn a recipe for a new type of candy! This exploration of engineering and chemistry will convince you that candy is more than just a tasty treat.

Eastside Preparatory: Week 2

Explorer West: Week 6

PacSci: Weeks 4, 8, 10

### Clever Contraptions

If you can make something from nothing, and everything from anything, then come test your skills. Put on your thinking cap to engineer solutions to amazing challenges! Learn the engineering process as you build looming spaghetti towers, craft stick catapults, and even a Rube Goldberg machine.

Eastside Preparatory: Week 1

Explorer West: Week 4

PacSci: Weeks 7, 9

### EverGREEN Explorers

Harvest new knowledge as we explore the ecosystems of Washington State. Become one with the earth as we plant a mini garden, make useful creations out of recycled materials, and filter water with the power of nature!

PacSci: Weeks 2, 8

St. Thomas: Week 6

### Get Set To Be a Vet

Unleash your inner veterinarian and discover the features of your favorite animals as you examine X-rays, study skeletons, explore digestive tracts, and dissect a specimen from a sheep!

Explorer West: Week 5

PacSci: Weeks 1, 3, 7

### Grossology

Investigate the slimy, squishy, icky, and sticky side of science with us! Your camper will explore the stinky science behind digestion, dirt, and decay during this extra gross week of camp.

Explorer West: Week 8

PacSci: Weeks 2, 6

St. Thomas: Week 4

### Itsy Bitsy Coders

Do you ever wonder what adventures a bat mixed with a llama would get into? Combine your creativity with basic programming to bring your own animal creation to life in a game using Bitsy.

Eastside Preparatory: Week 1

Explorer West: Week 7

PacSci: Week 3

St. Thomas: Week 5

### Lab Wizards

Unlock the secrets to sorcery and discover the science behind real life magic. Conjure up potions, create edible creatures, and ready your magical science knowledge for this curious week of camp.

Eastside Preparatory: Week 3

PacSci: Week 5

Salish: Week 1

St. Thomas: Week 7





# Grades 2–3

---

## Meteorologists in Training

Calling all future weather forecasters! Come explore the science behind the weather and learn how to predict if you will need sunscreen or snow boots tomorrow. Design meteorological instruments, create mini weather phenomena, and practice giving a newsworthy weather forecast in this weather filled camp.

---

PacSci: Weeks 1, 5

---

Salish: Week 3

## Out of This World

What does it take to become an astronaut and venture into space? Learn about what lies beyond the Earth as you make moon sand, learn about deep space travel, and launch rockets!

---

Eastside Preparatory: Week 2

---

Explorer West: Week 8

---

PacSci: Weeks 4, 10

---

St. Thomas: Week 6



## Playground Physics

Test the mechanisms that power your body while we examine the simple machines that make swings, slides, and seesaws so much fun. Work as a team to get active for a week of fun, games, and physics!

---

Explorer West: Week 6

---

Salish: Week 2

---

St. Thomas: Week 4

## Rockasaurus

From Apatosaurus to Zephyrosaurus, learn fascinating facts about your favorite dinos. Uncover fossils in our classroom dig site, discover why the Earth shakes, rattles and rolls, then build your own volcano and watch it blow!

---

Explorer West: Week 4

---

PacSci: Weeks 2, 6, 8

## Slough Sleuths

Grab your detective cap and magnifying glass as we explore who lives in the wetland, unearth crawly critters from underground, and discover how animals adapt in their habitats.

---

Mercer Slough: Weeks 1, 4, 7, 9

## Spy Science

Join us for a week of espionage in our Spy Academy to find the double agent in our ranks. Create a secret alias, build spy gadgets, and decipher top secret codes as you solve the mystery of the double agent amongst you.

---

Explorer West: Week 5

---

PacSci: Weeks 1, 9

---

Salish: Week 3

---

St. Thomas: Week 7



**This was the  
best camp my  
daughter has  
ever done.**

– 5<sup>th</sup> Grade Parent



## Under the Sea

Wade into marine biology as we explore marine ecosystems, animal adaptations, and reflect on how these habitats are changing. Create ocean art, play watery games, and perform aquatic experiments during this fun soaked week.

---

Eastside Preparatory: Week 3

---

PacSci: Weeks 5, 7

---

Salish: Week 1

## Wetland Wonders

Join us as we seek out the hidden creatures and marshy mysteries of Mercer Slough. Sink your hands into the soil of our wetlands to discover which invertebrates call this watery world home.

---

Mercer Slough: Weeks 2, 5, 8

## What's Up, Doc?

The hip bone's connected to the... what bone? Learn all about the human body as you make your own life-sized anatomy chart, practice a dissection, and create a model of a cell.

---

PacSci: Weeks 4, 6, 10

---

Salish: Week 2



# Grades 4–5

NEW! NEW! NEW! NEW!

## Animal Investigators

Reptiles, birds, and mammals, oh my! Uncover the mysteries of animal adaptations, discover the clues of classifications, and find out what makes animals unique in this fauna-filled week!

PacSci: Week 3

St. Thomas: Week 5

## ChemLab, Inc.

Become a researcher in a world-class chemistry laboratory, ChemLab, Inc.! Join your new team to conduct experiments to analyze reaction rates, concoct your own creations, and experiment to solve chemical design questions.

Explorer West: Week 4

PacSci: Weeks 2, 7



## Cooking Up Science

Let's get cooking! We'll serve up the science on where food comes from, which options are healthier, and what makes things taste good. Use the skills you learn over the week to plan and make a masterpiece meal.

PacSci: Weeks 4, 8

St. Thomas: Week 6

## Duct Tape Challenge

Test the strength and durability of duct tape to see if it really *can* fix everything. Let your creativity guide you as you construct your own duct tape creations like boats, catapults, or messenger bags.

Eastside Preparatory: Week 3

PacSci: Week 10

St. Thomas: Week 7

## OUTDOOR CAMP!

### Eco-Exploration

Calling all junior ecologists! Get ready to become one with nature during this camp without a roof. Explore the diverse ecosystems of Puget Sound through plant identification, water quality testing, animal tracking, and what it's like to work with the elements!

Mercer Slough: Weeks 2, 5, 8, 10

## Game Zone

Calling all Pokémon, Magic: The Gathering, and board game fans! Put your imagination to the test as you create your own game from scratch! Gather ideas from your favorite games, create your own game pieces, and test your creations in this fun filled week!

PacSci: Week 5

Salish: Week 3

St. Thomas: Week 7

## Inventor's Studio

Spend a week packed with brainstorming, experimentation and action. Study unique products from past and present inventors, the science used in their work, and the process behind innovation. Design, build, and test parachutes, marble runs, and more!

Eastside Preparatory: Week 2

PacSci: Weeks 4, 10

## NEW OUTDOOR CAMP!

### Living Laboratory

Come explore the fun of field ecology as we take science outside! Record it all in your trusty field journal as you choose between topics like wildlife monitoring, watershed health, or plant abundance and distribution.

Mercer Slough: Weeks 1, 4, 7



NEW! NEW! NEW! NEW!

## Mech Makers

Start your engineering journey with us as you build your very own mechanical masterpiece! Put your creativity to the test as you learn the principles of design, explore the basics of circuits, and take your cardboard creation through an obstacle course of your own making.

PacSci: Week 1

St. Thomas: Week 5

## Messy Science

Prepare yourself for the messiest, stickiest, and slimiest science that you have ever seen! Create fake body fluids, paint with bubbles, and test how far you can toss water balloons without them breaking. If it's wet, sticky, or slimy, we'll find an experiment to get you elbow deep in the science of mess.

PacSci: Week 8

St. Thomas: Week 6

# Grades 4–5

## Mission to Mars

Do you have what it takes to endure the cold and unforgiving Martian environment? Discover what it takes to travel to and survive on the red planet by building a base, space survival gear, and mission plan for when disaster strikes.

Explorer West: Week 5

PacSci: Weeks 7, 9

## OUTDOOR CAMP!

### Outdoor Survival School

Find out what it takes to survive in the wild in this all outdoor camp. Learn how to navigate with a compass, practice first aid, filter water, study the cosmos, and put your skills to the test for an end of the week survival challenge.

Mercer Slough: Weeks 3, 6, 9



### Ready, Set, Physics!

You don't need to sit under an apple tree to get inspired by physics. Go beyond Newton and discover how fun science can be when we build bridges, drop eggs, make slime, and engineer unique designs limited only by your imagination.

PacSci: Weeks 3, 6

Salish: Week 1

### Scratch That

Bring your art to life! Learn how to animate your own original story using Scratch's block-based coding. Create your own characters and illustrations to go along. At the end of the week, you'll have a project that you can show off to family and friends!

Explorer West: Week 7

Salish: Week 2

St. Thomas: Week 4



### Splash Science

Dive into the wettest week of the summer! Come explore the science of water as we launch water balloons, create water-powered vehicles, and experiment with the water around us. Campers will use physics and chemistry to learn what makes water so unique.

Explorer West: Week 8

PacSci: Weeks 2, 5



One of the  
most organized  
camps my kids  
have ever been  
to.

– 4<sup>th</sup> Grade Parent



### Young Entrepreneurs

Calling all future CEOs! Create your very own startup product to compete against rival businesses. Form a business plan on a budget while balancing supply and demand.

Eastside Preparatory: Week 1

PacSci: Week 6

St. Thomas: Week 4

### Young Physicians

Are you interested in becoming a doctor? Get a head start on a career in medicine as you make a cast, perform dissections, and learn the inner workings of your body's systems.

Explorer West: Week 6

PacSci: Weeks 1, 9

# Grades 6–8

**NEW! NEW! NEW! NEW!**

## Code Crafters

Explore Minecraft like never before with Code Builder! Automate huge builds in minutes using block-based coding and learn core programming concepts while coding your way through challenging adventures in the Minecraft world!

**Explorer West: Week 6**

**PacSci: Week 4**

## Discovering Robotics

Discover the world of robotics! Learn about electrical engineering, coding and 3D modeling by building robots that can avoid obstacles, follow lines, and process remote control commands.

**PacSci: Weeks 1, 3**

**St. Thomas: Week 6**

## Dissection Lab

Study the science of anatomy and learn professional techniques to dissect something new every day. Work your way up from a simple owl pellet to complex organs like eyes and brains.

**Explorer West: Week 7**

**PacSci: Week 2**

## Duct Tape Engineering

Can duct tape really fix everything? Explore engineering concepts through duct tape. Build duct tape bridges, towers, and even a boat that can hold a person as we explore how far we can stretch the strength of duct tape!

**Eastside Preparatory: Week 2**

**Explorer West: Week 4**

**PacSci: Week 6**

## Enviro-Engineering

Put on your hiking shoes to explore engineering in the natural world. Create designs to solve environmental engineering challenges and identify sustainable solutions to help humans, animals, and the environment.

**Mercer Slough: Weeks 1, 4, 7, 10**

## Exhibit Design

Explore universal design principles and the process for creating a compelling exhibit of your very own. From concept to creation campers will create a model of their exhibit to share with the PacSci community.

**PacSci: Weeks 8, 10**



## Food Lab

Don an apron, roll up your sleeves, and play with your food—for science! Explore how biology, chemistry, and physics are used to enhance the properties and flavors of food.

**PacSci: Week 9**

**St. Thomas: Week 5**

## Green by Design

What does it take to go green? Explore the science behind sustainability as we work together to identify old, current, and new ways to design a greener life.

**Mercer Slough: Weeks 2, 5, 8**

## Greener Future

Go green for the greater good! Find out how you can reduce environmental impacts, explore renewable energy sources, and create sustainable solutions for your community.

**Eastside Preparatory: Week 1**

**PacSci: Week 5**

**St. Thomas: Week 7**

## H-2-Whoa Adventures

Explore Mercer Slough's waterways! Collect and study macroinvertebrates and aquatic plants from this wetland and learn how they can be used as indicators of water health. Learn how scientists monitor water quality with field research tools like chemical tests, turbidity tubes, and pond dips.

**Mercer Slough: Weeks 3, 6, 9**

## Imagineopolis

Create your own fantastical board game! Play different board games to inspire your own. Learn the basics of board game design, the impact of character and world creation, and the importance of the perfect set of rules as you create your own board game.

**Explorer West: Week 8**

**St. Thomas: Week 4**

## Underwater Machines

Build a submersible machine that can perform tasks underwater. Master the environment through experiments in buoyancy, density, and pressure before taking home your new apparatus and fine motor skills.

**Eastside Preparatory: Week 3**

**Explorer West: Week 5**

**PacSci: Week 7**

# Calendar

## Pacific Science Center

### Week 1 · June 24–28

| Grades | Camp Name                    | Price |
|--------|------------------------------|-------|
| PreK–K | Tiny Tales <b>AM NEW!</b>    | \$290 |
|        | Ready, Seed, Grow! <b>PM</b> | \$290 |
| K–1    | Cookie Caper                 | \$545 |
|        | Start Your Engines           | \$545 |
|        | Teddy's Grand Adventure      | \$590 |
| 2–3    | Get Set To Be a Vet          | \$545 |
|        | Meteorologist in Training    | \$545 |
|        | Spy Science <b>SF</b>        | \$545 |
| 4–5    | Mech Makers <b>NEW!</b>      | \$650 |
|        | Young Physicians             | \$590 |
| 6–8    | Discovering Robotics         | \$650 |

### Week 2 · July 1–3 (Three-Day Week)

| Grades | Camp Name                   | Price |
|--------|-----------------------------|-------|
| PreK–K | Snack Science <b>AM</b>     | \$245 |
|        | Curious Creatures <b>PM</b> | \$245 |
| K–1    | Make Sense of It            | \$465 |
|        | Smartest Artist <b>SF</b>   | \$465 |
|        | Wild Ocean Adventures       | \$500 |
| 2–3    | EverGREEN Explorers         | \$465 |
|        | Grossology                  | \$465 |
|        | Rockasaurus                 | \$500 |
| 4–5    | ChemLab, Inc. <b>GF</b>     | \$500 |
|        | Splash Science              | \$500 |
| 6–8    | Dissection Lab              | \$500 |



### Week 3 · July 8–12

| Grades | Camp Name                        | Price |
|--------|----------------------------------|-------|
| PreK–K | To the Moon <b>AM</b>            | \$290 |
|        | Hydro Heroes <b>PM</b>           | \$290 |
| K–1    | Bug-ology <b>NEW!</b>            | \$545 |
|        | Cookie Caper                     | \$545 |
|        | Teddy's Grand Adventure          | \$590 |
| 2–3    | Beaker Buddies                   | \$590 |
|        | Get Set To Be a Vet              | \$545 |
|        | Itsy Bitsy Coders                | \$650 |
| 4–5    | Animal Investigators <b>NEW!</b> | \$545 |
|        | Ready, Set, Physics! <b>SF</b>   | \$545 |
| 6–8    | Discovering Robotics <b>GF</b>   | \$650 |

### Week 4 · July 15–19

| Grades | Camp Name                   | Price |
|--------|-----------------------------|-------|
| PreK–K | Little Lab <b>AM</b>        | \$290 |
|        | Snack Science <b>PM</b>     | \$290 |
| K–1    | 3–2–1 Blast Off!            | \$545 |
|        | Teddy's Grand Adventure     | \$590 |
|        | Wild Ocean Adventures       | \$590 |
| 2–3    | Candyology                  | \$590 |
|        | Out of This World <b>GF</b> | \$590 |
|        | What's Up, Doc?             | \$545 |
| 4–5    | Cooking Up Science          | \$590 |
|        | Inventor's Studio <b>SF</b> | \$650 |
| 6–8    | Code Crafters <b>NEW!</b>   | \$650 |

### Week 5 · July 22–26

| Grades | Camp Name                    | Price |
|--------|------------------------------|-------|
| PreK–K | Ready, Seed, Grow! <b>AM</b> | \$290 |
|        | To the Moon <b>PM</b>        | \$290 |
| K–1    | Biome Bonanza                | \$545 |
|        | Bug-ology <b>NEW!</b>        | \$545 |
|        | Superheroes                  | \$545 |
| 2–3    | Lab Wizards                  | \$545 |
|        | Meteorologist in Training    | \$545 |
|        | Under the Sea                | \$545 |
| 4–5    | Game Zone                    | \$545 |
|        | Splash Science               | \$590 |
| 6–8    | Greener Future <b>SF</b>     | \$545 |

### Week 6 · July 29–August 2

| Grades | Camp Name                       | Price |
|--------|---------------------------------|-------|
| PreK–K | World of Wonder <b>AM</b>       | \$290 |
|        | Hydro Heroes <b>PM</b>          | \$290 |
| K–1    | Building Blocks                 | \$545 |
|        | Start Your Engines              | \$545 |
|        | Teddy's Grand Adventure         | \$590 |
| 2–3    | Grossology                      | \$545 |
|        | Rockasaurus                     | \$590 |
|        | What's Up, Doc?                 | \$545 |
| 4–5    | Ready, Set, Physics!            | \$545 |
|        | Young Entrepreneurs <b>SF</b>   | \$545 |
| 6–8    | Duct Tape Engineering <b>GF</b> | \$590 |

### Week 7 · August 5–9

| Grades | Camp Name                     | Price |
|--------|-------------------------------|-------|
| PreK–K | Colorful Creations <b>AM</b>  | \$290 |
|        | Tiny Tales <b>PM NEW!</b>     | \$290 |
| K–1    | Biome Bonanza <b>SF</b>       | \$545 |
|        | Cookie Caper                  | \$545 |
|        | Story Explorers               | \$545 |
| 2–3    | Clever Contraptions <b>GF</b> | \$545 |
|        | Get Set To Be a Vet           | \$545 |
|        | Under the Sea                 | \$545 |
| 4–5    | ChemLab, Inc.                 | \$590 |
|        | Mission to Mars               | \$590 |
| 6–8    | Underwater Machines           | \$650 |

### Week 8 · August 12–16

| Grades | Camp Name                     | Price |
|--------|-------------------------------|-------|
| PreK–K | Curious Creatures <b>AM</b>   | \$290 |
|        | Snack Science <b>PM</b>       | \$290 |
| K–1    | 3–2–1 Blast Off!              | \$545 |
|        | Cookie Caper                  | \$545 |
|        | Smartest Artist               | \$545 |
| 2–3    | Candyology                    | \$590 |
|        | EverGREEN Explorers <b>SF</b> | \$545 |
|        | Rockasaurus                   | \$590 |
| 4–5    | Cooking Up Science            | \$590 |
|        | Messy Science                 | \$590 |
| 6–8    | Exhibit Design                | \$650 |



| Week 9 · August 19–23 |                               |       |
|-----------------------|-------------------------------|-------|
| Grades                | Camp Name                     | Price |
| PreK–K                | Little Lab <b>AM</b>          | \$290 |
|                       | Colorful Creations <b>PM</b>  | \$290 |
| K–1                   | Heating Up                    | \$545 |
|                       | Make Sense of It              | \$545 |
|                       | Wild Ocean Adventures         | \$590 |
|                       |                               |       |
| 2–3                   | Beaker Buddies                | \$590 |
|                       | Clever Contraptions <b>SF</b> | \$545 |
|                       | Spy Science                   | \$545 |
| 4–5                   | Mission to Mars <b>GF</b>     | \$590 |
|                       | Young Physicians              | \$590 |
| 6–8                   | Food Lab                      | \$590 |

| Week 10 · August 26–30 |                              |       |
|------------------------|------------------------------|-------|
| Grades                 | Camp Name                    | Price |
| PreK–K                 | Curious Creatures <b>AM</b>  | \$290 |
|                        | Ready, Seed, Grow! <b>PM</b> | \$290 |
| K–1                    | Building Blocks              | \$545 |
|                        | Smartest Artist              | \$545 |
|                        | Teddy's Grand Adventure      | \$590 |
|                        |                              |       |
| 2–3                    | Candyology                   | \$590 |
|                        | Out of This World            | \$590 |
|                        | What's Up Doc?               | \$545 |
|                        |                              |       |
| 4–5                    | Duct Tape Challenge          | \$590 |
|                        | Inventor's Studio <b>SF</b>  | \$650 |
| 6–8                    | Exhibit Design               | \$650 |

## Mercer Slough

| Week 1 · June 24–28 |                               |       |
|---------------------|-------------------------------|-------|
| Grades              | Camp Name                     | Price |
| PreK–K              | Fantastic Forests <b>AM</b>   | \$290 |
|                     | Mud, Muck, & Goo <b>PM</b>    | \$290 |
| K–1                 | Birds, Bugs, & Bunnies        | \$545 |
| 2–3                 | Slough Sleuths                | \$545 |
| 4–5                 | Living Laboratory <b>NEW!</b> | \$545 |
| 6–8                 | Enviro-Engineering <b>SF</b>  | \$545 |

| Week 2 · July 1–3 (Three-Day Week) |                              |       |
|------------------------------------|------------------------------|-------|
| Grades                             | Camp Name                    | Price |
| PreK–K                             | Animal Discoveries <b>AM</b> | \$245 |
|                                    | Wild Explorers <b>PM</b>     | \$245 |
| K–1                                | Natural Creations            | \$465 |
| 2–3                                | Wetland Wonders              | \$465 |
| 4–5                                | Eco-Exploration <b>GF</b>    | \$465 |
| 6–8                                | Green by Design              | \$465 |

| Week 3 · July 8–12 |                             |       |
|--------------------|-----------------------------|-------|
| Grades             | Camp Name                   | Price |
| PreK–K             | Mud, Muck, & Goo <b>AM</b>  | \$290 |
|                    | Fantastic Forests <b>PM</b> | \$290 |
| K–1                | Birds, Bugs, & Bunnies      | \$545 |
| 2–3                | Artsy Forestry              | \$545 |
| 4–5                | Outdoor Survival School     | \$545 |
| 6–8                | H-2-Whoa Adventures         | \$545 |

| Week 4 · July 15–19 |                               |       |
|---------------------|-------------------------------|-------|
| Grades              | Camp Name                     | Price |
| PreK–K              | Wild Explorers <b>AM</b>      | \$290 |
|                     | Animal Discoveries <b>PM</b>  | \$290 |
| K–1                 | Legends of Polliwog Pond      | \$545 |
| 2–3                 | Slough Sleuths <b>GF</b>      | \$545 |
| 4–5                 | Living Laboratory <b>NEW!</b> | \$545 |
| 6–8                 | Enviro-Engineering            | \$545 |

| Week 5 · July 22–26 |                             |       |
|---------------------|-----------------------------|-------|
| Grades              | Camp Name                   | Price |
| PreK–K              | Fantastic Forests <b>AM</b> | \$290 |
|                     | Mud, Muck, & Goo <b>PM</b>  | \$290 |
| K–1                 | Natural Creations <b>SF</b> | \$545 |
| 2–3                 | Wetland Wonders             | \$545 |
| 4–5                 | Eco-Exploration             | \$545 |
| 6–8                 | Green by Design             | \$545 |

| Week 6 · July 29–August 2 |                                   |       |
|---------------------------|-----------------------------------|-------|
| Grades                    | Camp Name                         | Price |
| PreK–K                    | Animal Discoveries <b>AM</b>      | \$290 |
|                           | Wild Explorers <b>PM</b>          | \$290 |
| K–1                       | Birds, Bugs, & Bunnies            | \$545 |
| 2–3                       | Artsy Forestry <b>SF</b>          | \$545 |
| 4–5                       | Outdoor Survival School <b>GF</b> | \$545 |
| 6–8                       | H-2-Whoa Adventures               | \$545 |

| Week 7 · August 5–9 |                               |       |
|---------------------|-------------------------------|-------|
| Grades              | Camp Name                     | Price |
| PreK–K              | Mud, Muck, & Goo <b>AM</b>    | \$290 |
|                     | Fantastic Forests <b>PM</b>   | \$290 |
| K–1                 | Legends of Polliwog Pond      | \$545 |
| 2–3                 | Slough Sleuths                | \$545 |
| 4–5                 | Living Laboratory <b>NEW!</b> | \$545 |
| 6–8                 | Enviro-Engineering <b>GF</b>  | \$545 |

| Week 8 · August 12–16 |                              |       |
|-----------------------|------------------------------|-------|
| Grades                | Camp Name                    | Price |
| PreK–K                | Wild Explorers <b>AM</b>     | \$290 |
|                       | Animal Discoveries <b>PM</b> | \$290 |
| K–1                   | Natural Creations            | \$545 |
| 2–3                   | Wetland Wonders              | \$545 |
| 4–5                   | Eco-Exploration              | \$545 |
| 6–8                   | Green by Design <b>SF</b>    | \$545 |

| Week 9 · August 19–23 |                             |       |
|-----------------------|-----------------------------|-------|
| Grades                | Camp Name                   | Price |
| PreK–K                | Fantastic Forests <b>AM</b> | \$290 |
|                       | Mud, Muck, & Goo <b>PM</b>  | \$290 |
| K–1                   | Birds, Bugs, & Bunnies      | \$545 |
| 2–3                   | Slough Sleuths <b>SF</b>    | \$545 |
| 4–5                   | Outdoor Survival School     | \$545 |
| 6–8                   | H-2-Whoa Adventures         | \$545 |

**AM** Morning Camp (9 a.m.–12 p.m.)  
**PM** Afternoon Camp (1 p.m.–4 p.m.)  
 All other camp sessions run from 9 a.m.–4 p.m.  
**GF** Girls Focused   **SF** Sensory Friendly

RECEIVE  
**\$15**  
 off all camps with  
 your PacSci Family  
 Membership

RECEIVE  
**\$30**  
 off all camps with your  
 PacSci Feature Family  
 or Igniter Membership

# Mercer Slough Cont.

| Week 10 · August 26–30 |                              |       |
|------------------------|------------------------------|-------|
| Grades                 | Camp Name                    | Price |
| PreK–K                 | Wild Explorers <b>AM</b>     | \$290 |
|                        | Animal Discoveries <b>PM</b> | \$290 |
| K–1                    | Legends of Polliwog Pond     | \$545 |
| 2–3                    | Artsy Forestry               | \$545 |
| 4–5                    | Eco-Exploration              | \$545 |
| 6–8                    | Enviro-Engineering           | \$545 |

# St. Thomas School

| Week 4 · July 15–19 |                         |       |
|---------------------|-------------------------|-------|
| Grades              | Camp Name               | Price |
| K–1                 | Building Blocks         | \$615 |
|                     | Make Sense of It        | \$615 |
|                     | Start Your Engines      | \$615 |
| 2–3                 | Grossology              | \$615 |
|                     | Playground Physics      | \$615 |
| 4–5                 | Scratch That <b>GF</b>  | \$720 |
|                     | Young Entrepreneurs     | \$615 |
| 6–8                 | Imagineopolis <b>SF</b> | \$615 |

| Week 5 · July 22–26 |                                  |       |
|---------------------|----------------------------------|-------|
| Grades              | Camp Name                        | Price |
| K–1                 | Little Olympics                  | \$615 |
|                     | Story Explorers <b>SF</b>        | \$615 |
|                     | Teddy's Grand Adventure          | \$660 |
| 2–3                 | Beaker Buddies <b>GF</b>         | \$660 |
|                     | Itsy Bitsy Coders                | \$720 |
| 4–5                 | Animal Investigators <b>NEW!</b> | \$615 |
|                     | Mech Makers <b>NEW!</b>          | \$720 |
| 6–8                 | Food Lab                         | \$660 |

**AM** Morning Camp (9 a.m.–12 p.m.)

**PM** Afternoon Camp (1 p.m.–4 p.m.)

All other camp sessions run from 9 a.m.–4 p.m.

**GF** Girls Focused   **SF** Sensory Friendly

| Week 6 · July 29–August 2 |                                |       |
|---------------------------|--------------------------------|-------|
| Grades                    | Camp Name                      | Price |
| K–1                       | 3–2–1 Blast Off!               | \$615 |
|                           | Cookie Caper                   | \$615 |
|                           | Heating Up                     | \$615 |
| 2–3                       | EverGREEN Explorers <b>SF</b>  | \$615 |
|                           | Out of This World              | \$660 |
| 4–5                       | Cooking Up Science             | \$660 |
|                           | Messy Science                  | \$660 |
| 6–8                       | Discovering Robotics <b>GF</b> | \$720 |

| Week 7 · August 5–9 |                       |       |
|---------------------|-----------------------|-------|
| Grades              | Camp Name             | Price |
| K–1                 | Beginner's Biology    | \$615 |
|                     | Bug-ology <b>NEW!</b> | \$615 |
|                     | Superheroes           | \$615 |
| 2–3                 | Lab Wizards           | \$615 |
|                     | Spy Science           | \$615 |
| 4–5                 | Duct Tape Challenge   | \$660 |
|                     | Game Zone <b>SF</b>   | \$615 |
| 6–8                 | Greener Future        | \$615 |

# Explorer West Middle School

| Week 4 · July 15–19 |                               |       |
|---------------------|-------------------------------|-------|
| Grades              | Camp Name                     | Price |
| PreK–K              | Curious Creatures <b>AM</b>   | \$290 |
|                     | World of Wonder <b>PM</b>     | \$290 |
| K–1                 | Heating Up                    | \$545 |
|                     | Smartest Artist <b>SF</b>     | \$545 |
| 2–3                 | Clever Contraptions <b>SF</b> | \$545 |
|                     | Rockasaurus <b>GF</b>         | \$590 |
| 4–5                 | ChemLab, Inc.                 | \$590 |
| 6–8                 | Duct Tape Engineering         | \$590 |

RECEIVE  
**\$15**

off all camps with  
your PacSci Family  
Membership

RECEIVE  
**\$30**

off all camps with your  
PacSci Feature Family  
or Igniter Membership

| Week 5 · July 22–26 |                               |       |
|---------------------|-------------------------------|-------|
| Grades              | Camp Name                     | Price |
| PreK–K              | Tiny Tales <b>AM NEW!</b>     | \$290 |
|                     | Colorful Creations <b>PM</b>  | \$290 |
| K–1                 | Beginner's Biology            | \$545 |
|                     | Cookie Caper                  | \$545 |
| 2–3                 | Get Set To Be a Vet           | \$545 |
|                     | Spy Science                   | \$545 |
| 4–5                 | Mission to Mars <b>SF</b>     | \$590 |
| 6–8                 | Underwater Machines <b>GF</b> | \$650 |

| Week 6 · July 29–August 2 |                              |       |
|---------------------------|------------------------------|-------|
| Grades                    | Camp Name                    | Price |
| PreK–K                    | Little Lab <b>AM</b>         | \$290 |
|                           | Snack Science <b>PM</b>      | \$290 |
| K–1                       | Make Sense of It             | \$545 |
|                           | Wild Ocean Adventures        | \$590 |
| 2–3                       | Candyology                   | \$590 |
|                           | Playground Physics           | \$545 |
| 4–5                       | Young Physicians             | \$590 |
| 6–8                       | Code Crafters <b>NEW! SF</b> | \$650 |

| Week 7 · August 5–9 |                              |       |
|---------------------|------------------------------|-------|
| Grades              | Camp Name                    | Price |
| PreK–K              | To the Moon <b>AM</b>        | \$290 |
|                     | Ready, Seed, Grow! <b>PM</b> | \$290 |
| K–1                 | Little Olympics              | \$545 |
|                     | Teddy's Grand Adventures     | \$590 |
| 2–3                 | Beaker Buddies               | \$590 |
|                     | Itsy Bitsy Coders            | \$650 |
| 4–5                 | Scratch That <b>GF</b>       | \$650 |
| 6–8                 | Dissection Lab               | \$590 |

| Week 8 · August 12–16 |                           |       |
|-----------------------|---------------------------|-------|
| Grades                | Camp Name                 | Price |
| PreK–K                | Hydro Heroes <b>AM</b>    | \$290 |
|                       | World of Wonder <b>PM</b> | \$290 |
| K–1                   | Building Blocks           | \$545 |
|                       | Start Your Engines        | \$545 |
| 2–3                   | Grossology                | \$545 |
|                       | Out of This World         | \$590 |
| 4–5                   | Splash Science            | \$590 |
| 6–8                   | Imagineopolis             | \$545 |



## Eastside Preparatory School

### Week 1 · June 24–28

| Grades | Camp Name                     | Price |
|--------|-------------------------------|-------|
| K–1    | Beginner's Biology            | \$545 |
|        | Superheroes                   | \$545 |
| 2–3    | Clever Contraptions <b>SF</b> | \$545 |
|        | Itsy Bitsy Coders             | \$650 |
| 4–5    | Young Entrepreneurs           | \$545 |
| 6–8    | Greener Future                | \$545 |

### Week 2 · July 1–3 (Three-Day Week)

| Grades | Camp Name                   | Price |
|--------|-----------------------------|-------|
| K–1    | 3–2–1 Blast Off!            | \$465 |
|        | Teddy's Grand Adventure     | \$500 |
| 2–3    | Candyology                  | \$500 |
|        | Out of This World <b>GF</b> | \$500 |
| 4–5    | Inventor's Studio           | \$550 |
| 6–8    | Duct Tape Engineering       | \$500 |

### Week 3 · July 8–12

| Grades | Camp Name                 | Price |
|--------|---------------------------|-------|
| K–1    | Biome Bonanza             | \$545 |
|        | Story Explorers <b>SF</b> | \$545 |
| 2–3    | Lab Wizards               | \$545 |
|        | Under the Sea             | \$545 |
| 4–5    | Duct Tape Challenge       | \$590 |
| 6–8    | Underwater Machines       | \$650 |

## Salish Sea Elementary

### Week 1 · June 24–28

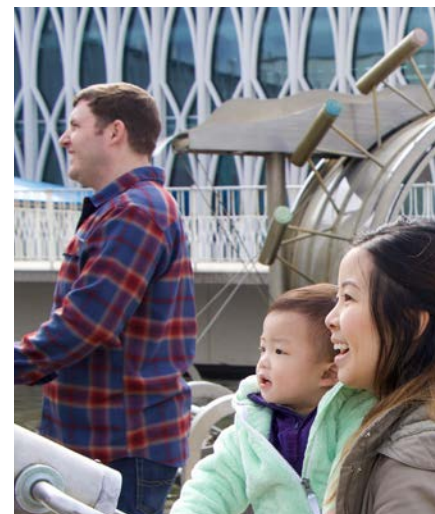
| Grades | Camp Name                      | Price |
|--------|--------------------------------|-------|
| PreK–K | Hydro Heroes <b>AM</b>         | \$280 |
|        | To the Moon <b>PM</b>          | \$280 |
| K–1    | Biome Bonanza                  | \$525 |
|        | Story Explorers <b>SF</b>      | \$525 |
| 2–3    | Lab Wizards                    | \$525 |
|        | Under the Sea                  | \$525 |
| 4–5    | Ready, Set, Physics! <b>GF</b> | \$525 |

### Week 2 · July 1–3 (Three-Day Week)

| Grades | Camp Name                 | Price |
|--------|---------------------------|-------|
| PreK–K | Little Lab <b>AM</b>      | \$235 |
|        | World of Wonder <b>PM</b> | \$235 |
| K–1    | Cookie Caper              | \$445 |
|        | Little Olympics           | \$445 |
| 2–3    | Playground Physics        | \$445 |
|        | What's Up, Doc?           | \$445 |
| 4–5    | Scratch That              | \$530 |

### Week 3 · July 8–12

| Grades | Camp Name                    | Price |
|--------|------------------------------|-------|
| PreK–K | Colorful Creations <b>AM</b> | \$280 |
|        | Ready, Seed, Grow! <b>PM</b> | \$280 |
| K–1    | Beginner's Biology           | \$525 |
|        | Superheroes                  | \$525 |
| 2–3    | Meteorologist in Training    | \$525 |
|        | Spy Science                  | \$525 |
| 4–5    | Game Zone <b>SF</b>          | \$525 |



## MEMBERS GET MORE.

Pacific Science Center members receive early access and savings on summer camps, but did you know they also enjoy tons of other great benefits? Members receive free admission to PacSci for named members plus discounts on IMAX® movies, laser shows, guest tickets and more. Join today!

For more information on membership, visit our website at [pacsci.org/membership](http://pacsci.org/membership).

# Registration, Health, and Safety

## Registration Details

- Registration will be conducted directly through CampDoc. A link to PacSci's CampDoc registration portal and more information on using the platform will be provided at [pacsci.org/camps](https://pacsci.org/camps). If you do not have a CampDoc account for Pacific Science Center Camps, you will need to create a free profile for your camper before registering for camp sessions.
- General registration opens Feb. 13, 2024 at 10 a.m. The CampDoc link will be posted on this day at [pacsci.org/camps](https://pacsci.org/camps). Member registration opens Feb. 6, 2024 at 10 a.m. Members will receive an email with registration information prior to early registration.
- When registering, choose the grade level your camper will be entering in Fall 2024.
- All camps require a \$50 non-refundable deposit upon registration. Full payment can be made when you register. The full balance is due by May 1, 2024. If it is not paid by this date, the remaining balance will be automatically charged on May 1, 2024.
- Registrations made after May 1 require full payment at the time of registration.
- Registration for each in-person camp session closes at 11:59 p.m. the Tuesday before the session's start date.

## Waitlist Process

- If a camp is full at the time of registration, we encourage you to add your camper to the waitlist. If an opening occurs, we will notify you by email. Openings only occur if someone transfers camps or cancels their registration.
- Once notified via email, the first person on the waitlist will have 24 hours to confirm their registration acceptance for the camp before a notification is sent to the next person on the waitlist.
- Due to the physical limitations of our classroom spaces and our required educator-to-camper ratios, we cannot add spaces to full camps.

## Transfers

- We understand that campers may wish to transfer to a different open camp session after initial registration. The non-refundable \$50 deposit is non-transferable and will be paid for each new camp session registration. If a transfer occurs ten or more full business days prior to the start of camp, the fee paid to the initial camp, minus the \$50 non-refundable deposit, may be transferred to the new camp. To transfer your camper to a new camp, first register for the new open camp session via CampDoc. Once registered, follow the cancellation process for the original camp.
- Note that camp registration closes at 11:59 p.m. the Tuesday before the camp start date.

## Cancellations

- To be eligible for a full refund minus the \$50 non-refundable deposit, requests for withdrawal from camp must be received via



CampDoc and to the [camps@pacsci.org](mailto:camps@pacsci.org) inbox at least 10 full business days prior to the start of the camp week (e.g. a withdrawal for Week Five must be received no later than Monday of Week Three at 9 a.m.). Afternoon-only (PM) camp withdrawal requests must also be received by the 9 a.m. deadline.

- To cancel your registration, submit a cancellation request via CampDoc and email [camps@pacsci.org](mailto:camps@pacsci.org) with your name, camper name, and registration information. Any cancellation request made with fewer than ten full business days' notice will not be eligible for any refund.
- PacSci and our partners will make every effort to run camp sessions as scheduled, but in the event of extenuating circumstances requiring PacSci to cancel a camp, we will issue a prorated refund for days canceled. If PacSci does not cancel a camp but a family chooses to miss a day or misses due to any type of illness, no refunds, make-ups, or credits will be provided.

## Extended Day Care

- PacSci is offering PM Extended Care with Camps 2024! This add-on is an optional purchase during registration on CampDoc for \$80 per camp session.



Extended Care ends promptly at 6 p.m. each day. No one-day purchases are available. Any unplanned extended care or late pick-ups from camp results in a fee of \$20 for 1–10 minutes late, plus \$10 for every 10-minute interval thereafter (i.e. 11–20 minutes late = \$30, 21–30 minutes late = \$40, etc.)

## Lunches

- Daily lunches are included in registration fees at St. Thomas and offered for purchase at all other locations. All lunches will be individually packaged and adhere to safety guidelines. Visit [pacsci.org/camps](https://pacsci.org/camps) for our menu and pricing.

## Scholarships

- PacSci offers full scholarships for prospective campers who qualify in any of the following ways:
  - Camper qualified for free or reduced lunch program for the 2023–2024 school year.
  - Camper is in the foster care system currently, or was during the 2023–2024 school year.
  - Parent/guardian enrolled in the food assistance program (SNAP) or other public assistance programs.



- Family Access or Youth Access Membership: A low-income membership in the parent, guardian, or camper's name.
- Scholarships are distributed using a lottery system. Completing an application does not guarantee that you will receive a scholarship.
- You will be notified on March 29, 2024 of one of three possible outcomes: scholarship recipient, waitlist, or not selected for a scholarship. If you are waitlisted, you will be contacted if a recipient does not accept their scholarship, or if additional scholarships are funded.

## To Apply

- The application will be available at [pacsci.org/camps](https://pacsci.org/camps) on Feb. 1, 2024.
- If you are the parent or guardian of multiple children, please note that one complete application must be submitted for each prospective camper.
- If you have any questions about scholarships, please email [camps@pacsci.org](mailto:camps@pacsci.org), with "2024 Summer Camp Scholarships" as the subject line.

## Health and Safety

We are committed to safely delivering summer camp experiences for all campers and staff in compliance with the Washington State Department of Health guidance, and we will continue to closely monitor the health of everyone onsite at our camp locations.

Camp sick policies and procedures may change based on updated local,

state, and federal guidance and health recommendations. Any changes will be posted online and registrants will be notified.

We will continue to enforce our Sick Camper Policy, and will communicate with families when a known COVID-19 exposure occurs during camp.

## Sick Camper Policy

- In order to attend an in-person summer camp, all parents or guardians of campers must review and sign our Sick Camper Policy. The policy includes acknowledgment that campers exhibiting symptoms within the 24 hours prior to camp will not be allowed to attend camp.
- The policy must be reviewed, signed, and submitted electronically in the camper health profile through CampDoc during registration.

## High Risk Groups

- Those at high risk for health problems from COVID-19 should consult with their health care provider when considering whether to participate in Camps for Curious Minds.

## Important Scholarship Dates

- **Feb. 1, 2024:** Application available.
- **March 25, 2024:** Application due by 11:59 p.m.
- **March 29, 2024:** Recipients notified.
- **April 5, 2024:** Camper acceptance deadline.

# EXPLORE WHAT'S NEXT

## Super Sleuth Math

Find the missing sum!

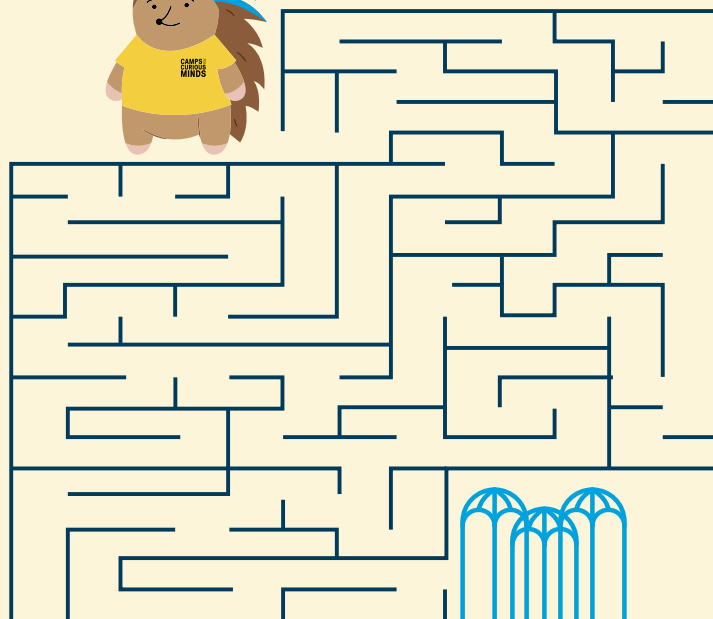
$$\text{lemon} + \text{lemon} + \text{lemon} = 15$$

$$\text{tape} + \text{lemon} = 9$$

$$\text{dragonfly} + \text{tape} = 12$$

$$\text{dragonfly} + \text{lemon} + \text{tape} = \square$$

Help Harriet the Hedgehog find her way to camp!



## Summer Search

Find the hidden words. Words can go in any direction (including backward!) and cross over each other.

|            |              |         |
|------------|--------------|---------|
| Heron      | Parachute    | Code    |
| Slime      | Cookie       | Game    |
| Weather    | Design       | Explore |
| Experiment | Entrepreneur | Marsh   |

|   |   |   |   |   |   |   |   |   |   |   |   |   |   |   |   |
|---|---|---|---|---|---|---|---|---|---|---|---|---|---|---|---|
| W | E | H | Q | N | L | E | E | S | L | I | M | E | W | C | Z |
| N | E | I | S | U | U | S | X | Q | A | K | F | G | J | I | G |
| G | M | A | K | R | N | W | P | I | D | R | T | A | P | K | C |
| I | P | C | T | O | A | F | E | T | U | H | C | A | R | A | P |
| S | P | L | B | H | O | M | R | N | C | J | X | V | G | G | E |
| E | V | L | L | D | E | C | I | I | W | O | T | B | N | G | J |
| D | M | P | Q | C | D | R | M | I | D | I | D | O | D | A | W |
| E | N | T | R | E | P | R | E | N | E | U | R | E | D | M | T |
| E | R | O | L | P | X | E | N | L | H | E | K | S | I | E | Y |
| M | B | T | V | F | G | L | T | G | H | Z | E | F | N | T | F |

# Mobility Guide

Mobility can be a determining factor when choosing summer camps for your child. PacSci offers a wide range of camps across the spectrum of mobility, and the guide below will help you find the perfect camp to fit your child’s needs.

**Light:** May include light walking, visiting exhibits (PacSci only), table-top crafts, and optional active games.

**Moderate:** May include 1–2 mile hikes in a day, sitting and standing for large crafts, cooking, and less than 30 minutes of running activities per day.

**Active:** May include 1–3 mile hikes in a day, long periods of standing, 30–45 minutes of running activities per day, and canoeing.

**Vigorous:** May include 3–6 mile hikes in a day, 1+ hours of sports or acrobatics, more than 45 minutes of running activities per day, and canoeing.

For individuals seeking accessibility accommodations or if your camper requires a personal aide at camp, please contact [camps@pacsci.org](mailto:camps@pacsci.org). PacSci requires a background check and two weeks notice for all personal camper aides.

|          | PreK–K             | K–1                      | 2–3                       | 4–5                     | 6–8                   |
|----------|--------------------|--------------------------|---------------------------|-------------------------|-----------------------|
| Light    | Colorful Creations | Heating Up               | Beaker Buddies            | ChemLab, Inc.           | Code Crafters         |
|          | Snack Science      | Make Sense of It         | Itsy Bitsy Coders         | Game Zone               | Imagineopolis         |
|          | To the Moon        | Smartest Artist          | Meteorologist in Training | Messy Science           |                       |
|          | World of Wonder    | Story Explorers          | Out of This World         | Scratch That            |                       |
|          | Little Lab         | Teddy’s Grand Adventure  | What’s Up, Doc?           |                         |                       |
|          | Hydro Heroes       | Wild Ocean Adventures    |                           |                         |                       |
| Moderate | Building Blocks    | 3–2–1 Blast Off!         | Candyology                | Animal Investigators    | Discovering Robotics  |
|          | Curious Creatures  | Beginner’s Biology       | Clever Contraptions       | Cooking Up Science      | Dissection Lab        |
|          | Ready, Seed, Grow! | Biome Bonanza            | EverGREEN Explorers       | Duct Tape Challenge     | Duct Tape Engineering |
|          | Tiny Tales         | Bug-ology                | Get Set To Be a Vet       | Inventor’s Studio       | Exhibit Design        |
|          |                    | Cookie Caper             | Grossology                | Mech Makers             | Food Lab              |
|          |                    | Start Your Engines       | Rockasaurus               | Mission to Mars         | Greener Future        |
|          |                    | Superheroes              | Spy Science               | Ready, Set, Physics!    | Underwater Machines   |
|          |                    |                          | Under the Sea             | Young Entrepreneurs     |                       |
| Active   | Animal Discoveries | Little Olympics          | Artsy Forestry            | Splash Science          | Enviro-Engineering    |
|          | Fantastic Forests  | Birds, Bugs & Bunnies    | Lab Wizards               |                         | Green by Design       |
|          | Mud, Muck, & Goo   | Legends of Polliwog Pond | Playground Physics        |                         |                       |
|          | Wild Explorers     | Natural Creations        | Slough Sleuths            |                         |                       |
|          |                    |                          | Wetland Wonderland        |                         |                       |
| Vigorous |                    |                          |                           | Eco Exploration         | H-2-Whoa Adventures   |
|          |                    |                          |                           | Living Laboratory       |                       |
|          |                    |                          |                           | Outdoor Survival School |                       |

**CAMPS  
CURIOUS  
MINDS**

**PACIFIC  
SCIENCE  
CENTER**



200 Second Avenue N  
Seattle, Washington  
98109-4895

NON-PROFIT ORG.  
U.S. POSTAGE  
**PAID**  
SEATTLE, WA  
PERMIT NO. 1424



**Member Registration Opens**  
February 6, 2024.

**General Registration Opens**  
February 13, 2024.



Plan Your Summer At  
**[pacsci.org/camps](https://pacsci.org/camps)**

*Camps for Curious Minds is presented by*

 Bristol Myers Squibb™