



-  Restrooms
-  Elevator
-  Stairs
-  Info Desk
-  Concessions
-  Nursing Room
-  Stroller Parking

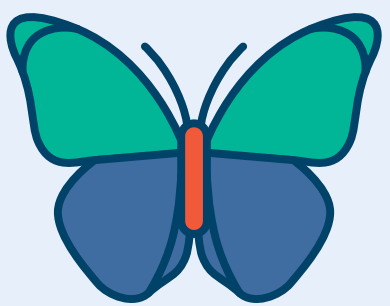




# STEP INTO SCIENCE

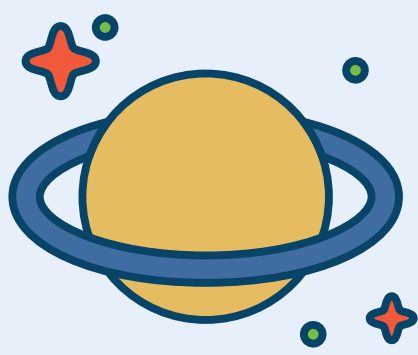
We're thrilled to welcome guests back at PacSci for brand new experiences, as well as familiar ones that our community knows and loves. Listed here are some of our unmissable favorites, along with some tips to help you get the most out of your experience and ignite your curiosity.

## Tropical Butterfly House



Experience hundreds of breathtaking butterflies in their tropical habitat. Practice your powers of observation with our butterfly and plant identification guides.

## Willard Smith Planetarium



Blast-off to the outer reaches of the universe, or discuss current astronomy news and recent discoveries. Each show is live, and presenters can modify the program based on interest.

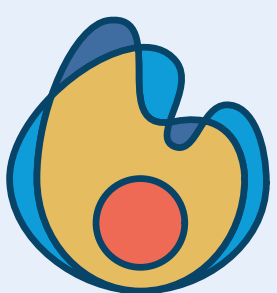
• Due to limited capacity, timed-entry tickets are required. Tickets are included with admission, and are available at the info desk.

## Tinker Tank Makerspace



Put your engineering cap on and start experimenting, building, and inventing. The expanded space is bigger than ever, and featured activities change regularly.

## Live Science Stage

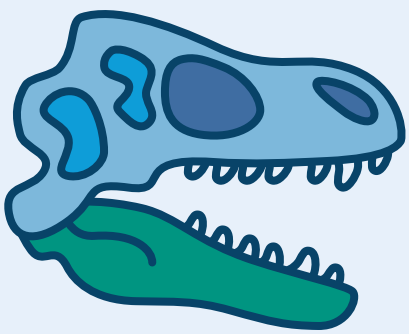


Experience science at its most theatrical with experiments, demos, and amazing tricks. Topics rotate every day, so there's always something new to experience.

• Daily showtimes are listed in the stage area; seats are first come, first served!



## Dinosaurs



Take a trip through time and learn all about these ancient creatures. Examine fossils and footprints, and learn the latest developments in dino-science.

## Laser Dome



One of the largest in the world, PacSci's Laser Dome packs 10,000 watts of concert sound and dazzling imagery into a one-of-a-kind experience.

- Daytime laser shows are included with admission.
- Due to limited capacity, timed-entry tickets are required. Tickets are available at the info desk.

## Salt Water Tide Pool



Discover, explore, and interact with the marine life that lives in tide pools at local Puget Sound beaches, like sea anemones and urchins.

## Agents of Discovery



Explore PacSci through an interactive, educational app that helps you dive deeper into our on-site experiences. Learn more and collect unique prizes at our Info Desk.

## IMAX® Theaters

PacSci is the home of Seattle's ultimate IMAX experience, including Washington's largest screen, with two state of-the-art theaters: PACCAR and Boeing.

IMAX® is a registered trademark of IMAX Corporation.

- Feature films play regularly at Boeing IMAX Theater, with advanced digital projection on a six-story screen.
- IMAX tickets are available at the info desk.

## Additional Tips

- For more food options, make your way to the Seattle Center Armory, on the other side of the mural amphitheater outside our Main Gates.
- Re-entry allowed with ticket or a dinosaur hand stamp from the ticket booth.
- If you are looking for something that may have moved or been retired, visit [pacsci.org/faq](http://pacsci.org/faq).